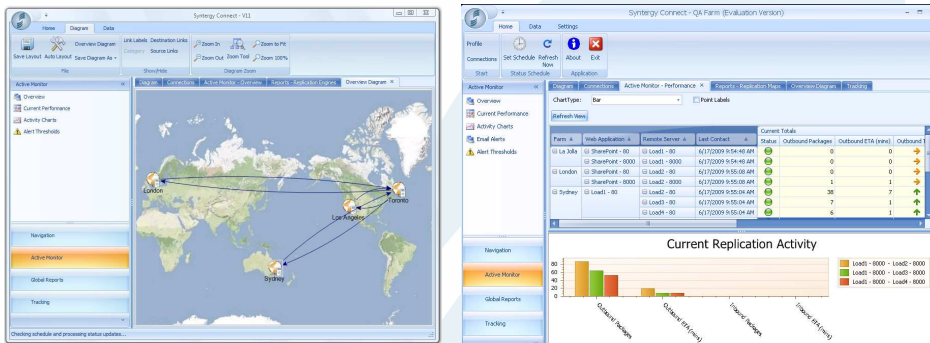
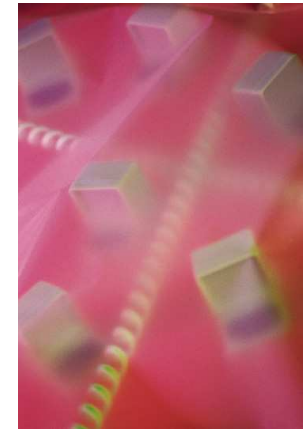


**Optional Add-on for Replicator.** Provides the ability to visualize, monitor and manage your replicator enabled SharePoint wide area farm environment.



**Visualize.** Each SharePoint farm is visualized with the connections that exist between each of the nodes. The ability to zoom down to various detail levels allows the end user to see the connections that exist with ease. Each of the nodes can be assigned custom graphics to depict the overall environment and full printer support and export to various forms.

**Monitor.** Set thresholds for key performance indicators to monitor the activity of replication packages, events and transferred data. Log historic trends, graph and display key information in an interactive graphical environment. Traffic data can be enabled on the graphical view to diagram flow rates with animated connections.

**Manage.** As you navigate through each of the nodes in the graphical or tree views, you can launch any of the administrative screens within Replicator to edit a connection.

## Key Features

- Interfaces with all editions of Replicator
- Graphical display of all farms
- Active monitoring to alert and visualize traffic
- Quick launch of management screens from each node
- Print Replicator topology
- Drill into farms, web applications, site collections down to individual maps
- Packaged reports
- Support for Enterprise Edition features for event-level tracking

## Specifications

**Replicator:** Synergy Replicator 3.0 is required to be installed and configured. Connect runs as a desktop application on Windows XP/Vista and Windows Servers.